

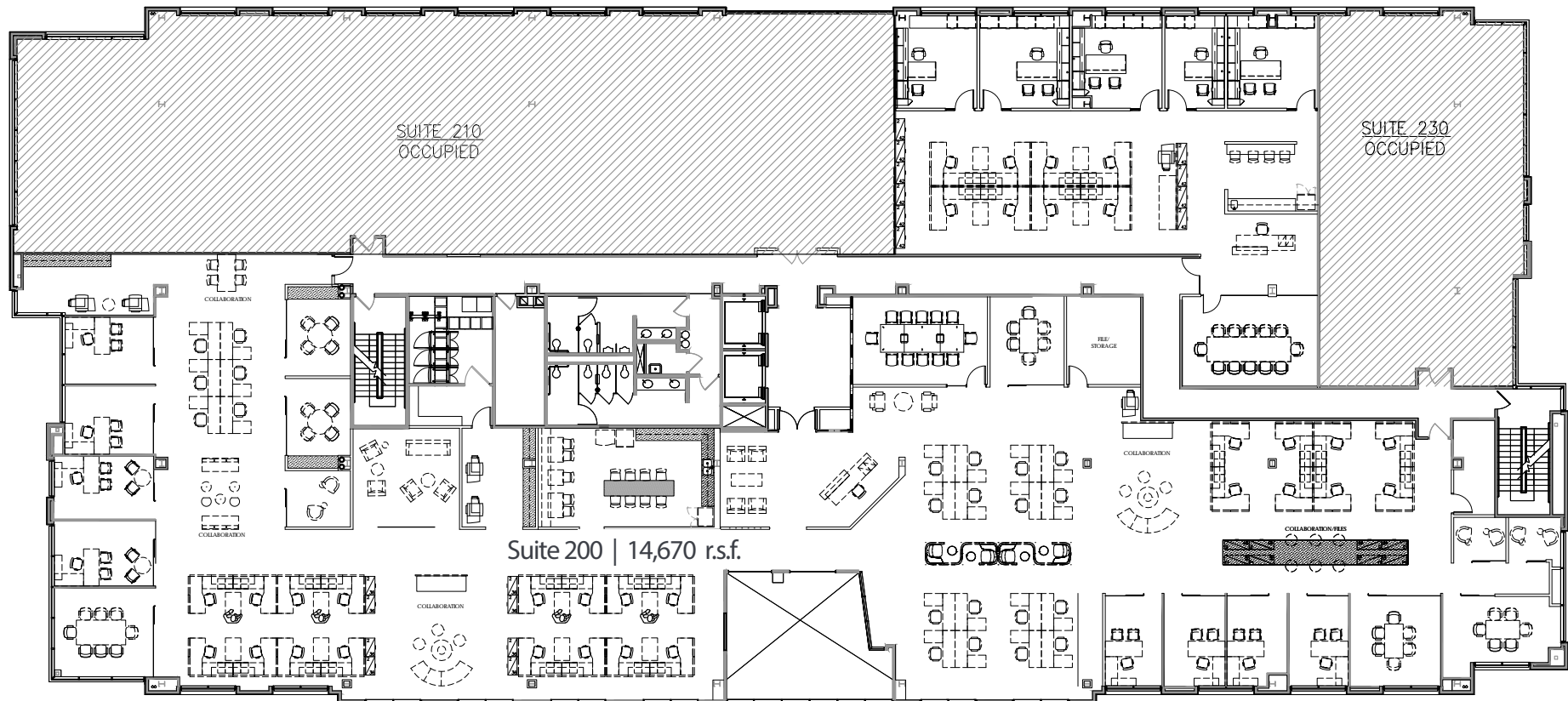


12265 El Camino Real

Hypothetical | Suite 200 | 14,670 r.s.f.

Suite 220 | 3,678 r.s.f.

Suite 220 | 3,678 r.s.f.



Tony Russell
tony.russell@amjll.com
858.410.1213
Lic. No. 01275372

Bess Wakeman
bess.wakeman@amjll.com
858.410.1245
Lic. No. 01177659



PASEO
DEL MAR